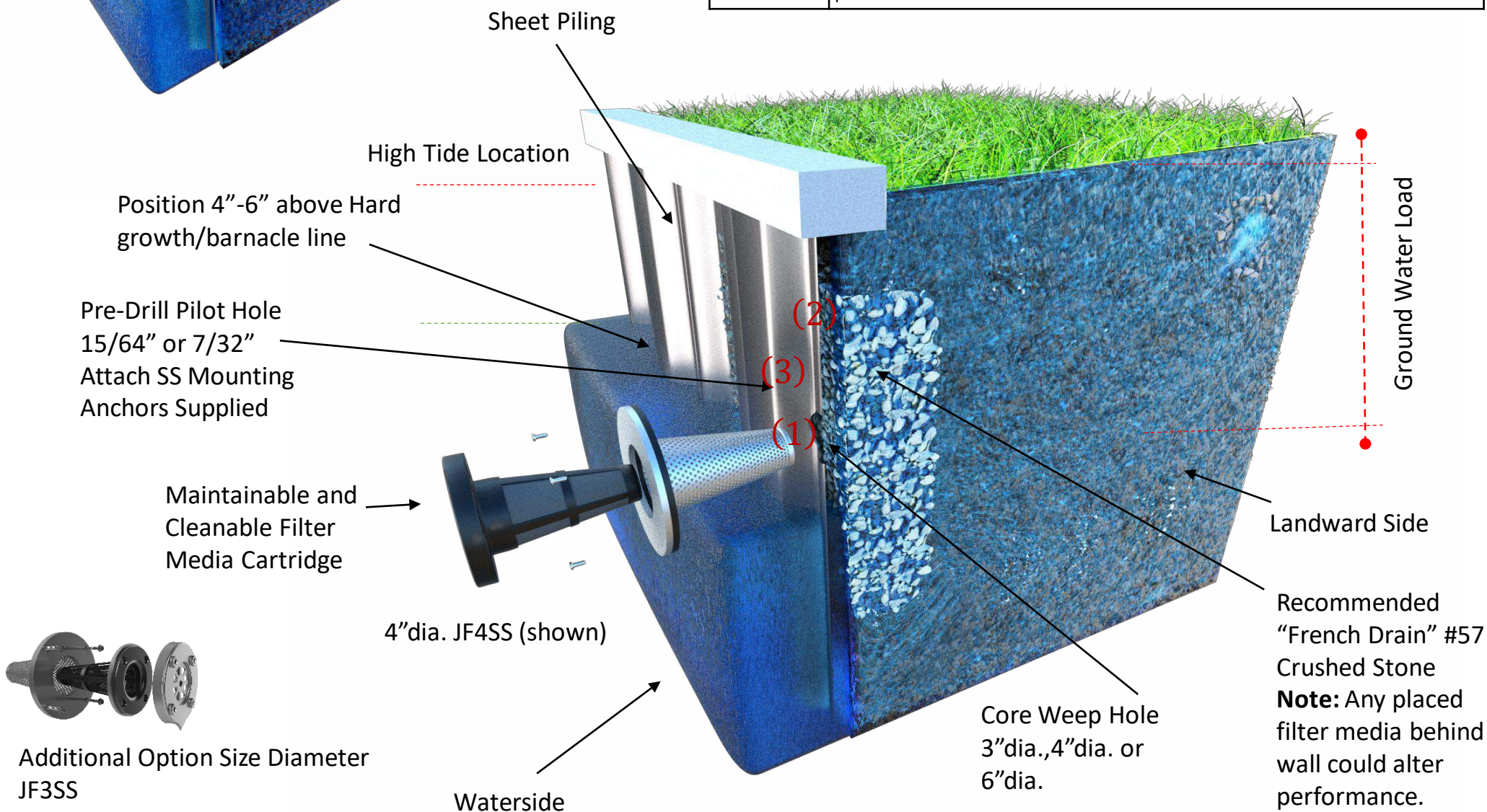
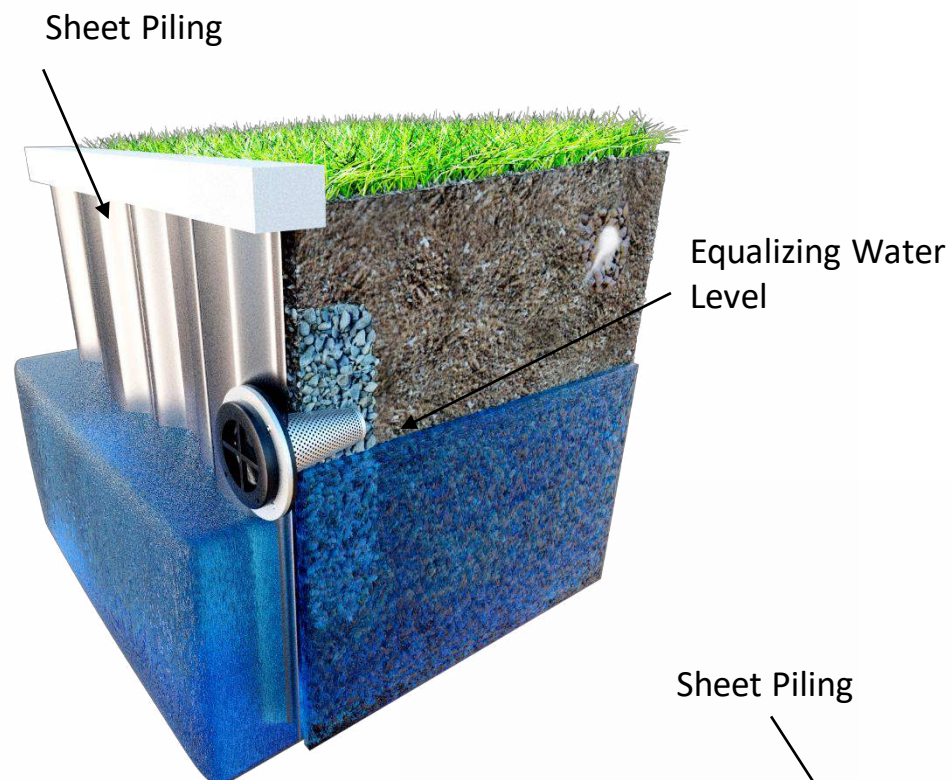


Step	Installation Guide*
(1)	Prepare the installation locations by ensuring the wall is smooth and level to allow the filter housing to install flush with the wall. Core a hole so that the bottom rim of the unit is 4-6 inches above the hard growth/barnacle waterline or soil line. Core through the thickness of the wall and far enough for the housing to slide fully into the wall. Please note, if there is an algae or barnacle line, confirm units are free of obstruction. Insert the JET Filter housing into the cored hole. Rotate the housing unit so the JET Filter logo is positioned at the top.
(2)	For best results, a flowable material such as crushed #57 stone should be placed behind the wall around the filter. For installations where digging behind the wall is not possible and no flowable material exist at the installation locations, consider coring further into the ground and packing flowable material such as sand, pea gravel, crushed stone etc. through the core entry hole prior to filter installation.
(3)	Mount the housing unit to the wall by pre-drilling 15/64 or 7/32" pilot holes into the wall using the existing holes in the housing as a guide. Attach the housing to wall with the provided stainless steel, self-drilling screws through the housing plate holes into the wall.



### Standard Weep Hole Component Installation Detail

US PAT#7,615,148  
Made in the USA

#### Description:

Sheet Piling ie:  
Steel, Vinyl,  
Composite,  
Aluminum

Date: 3/1/2017

Drawn By: DWG

\*Due to varying local conditions, each installation is unique. An engineer or contractor knowledgeable on local conditions should be consulted prior to installation. JET Filter System assumes no responsibility for product installation or use.